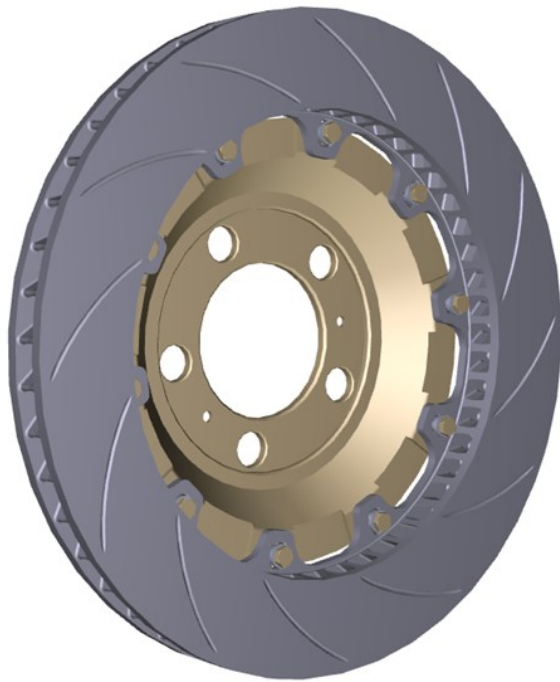
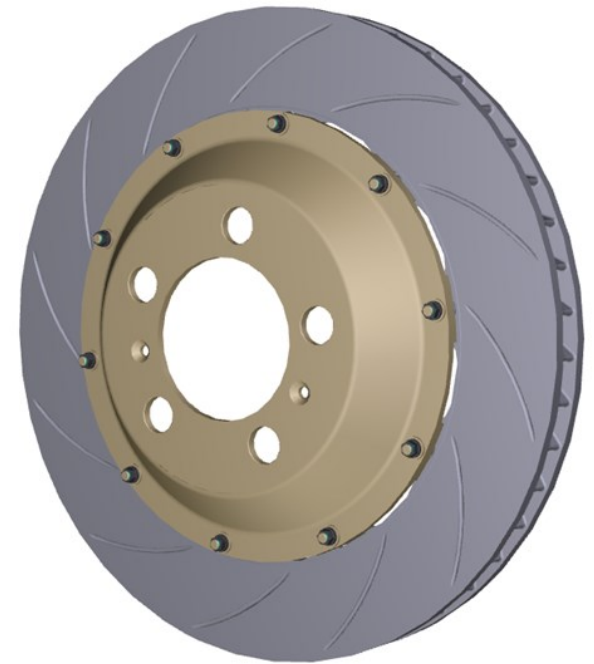


# TMD PERFORMANCE

A NISSHINBO GROUP COMPANY

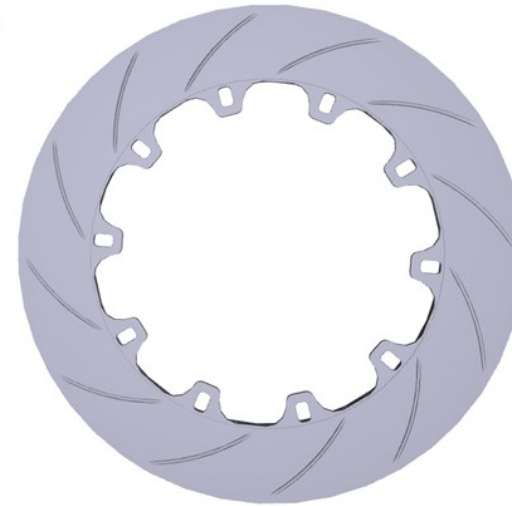
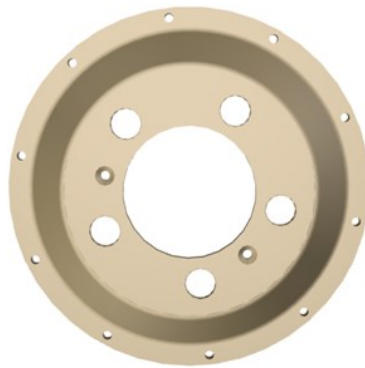


## Disc Assembly Instructions



## REQUIRED PARTS

- Pagid RBD Rotor
- Pagid RBD Bell / Hub
- Pagid RBD Bobbin Set\*



\*The number of screws, bobbins, washers and screw-nuts should correspond to the number of fixing tabs!

## REQUIRED TOOLS

---

- Torque wrench (adjustable 14 Nm)
- Ring spanner/Box end wrench (either a 7/16 inch or 11 mm will work)
- Socket (5/16 inch or 8 mm will fit)

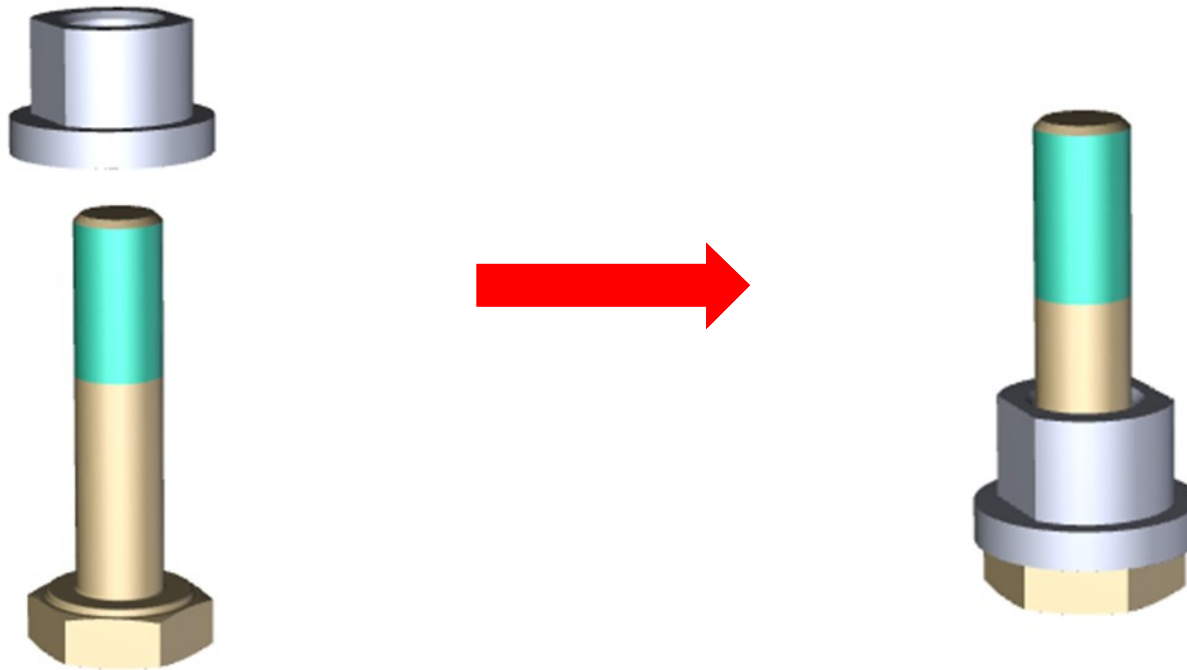
## BEFORE YOU START

---

- Make sure your Rotor and Bell are free from any damage!
- Make sure your Rotor and Bell are free from pollution/dirt/contamination!
- Make sure you have the correct parts!
- Don't use other screws, washers, bobbins, other nuts!
- Don't re-use screws, washers, bobbins, nuts.
- Carry out the assembly in a safe environment.

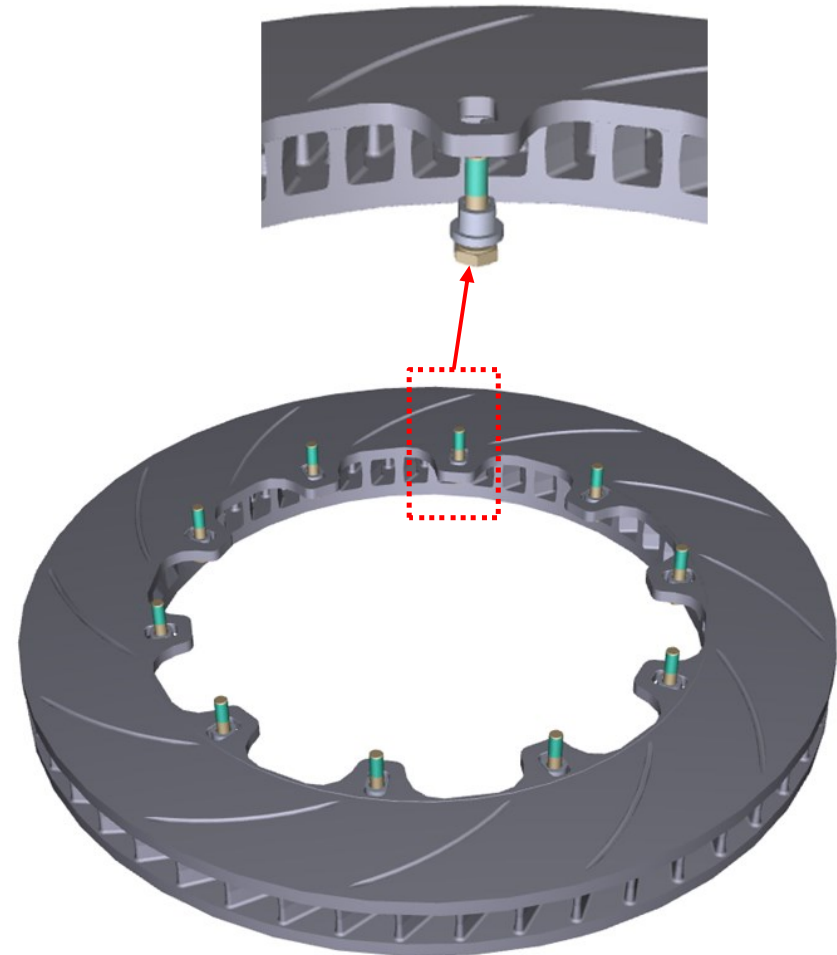
## STEP 1

- Put one bobbin on each screw (washer is not necessary)
- Direction of the flange/shoulder towards the head of the screw



## STEP 2

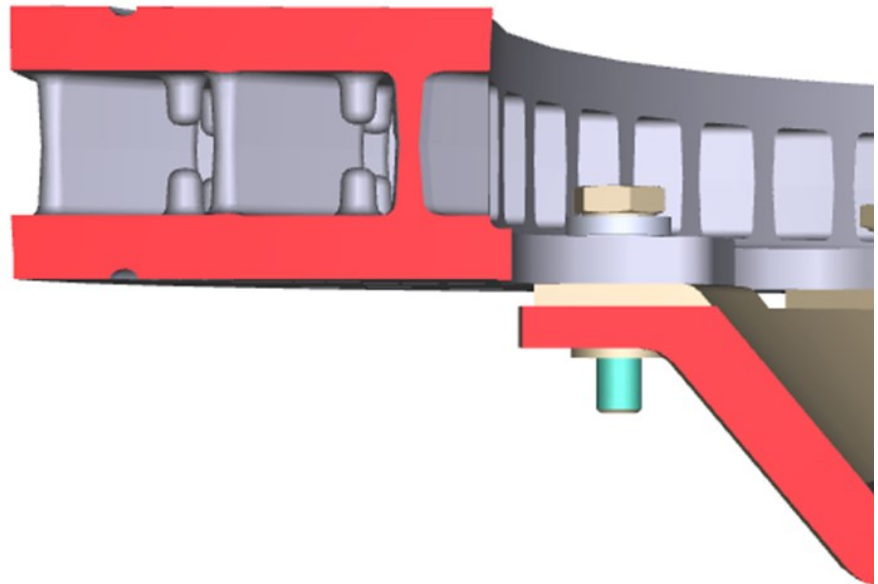
- Put the screw with mounted bobbin into one of the slotted holes of the rotor-flange
- Make sure the flat surface of the bobbin and the slotted hole are well aligned





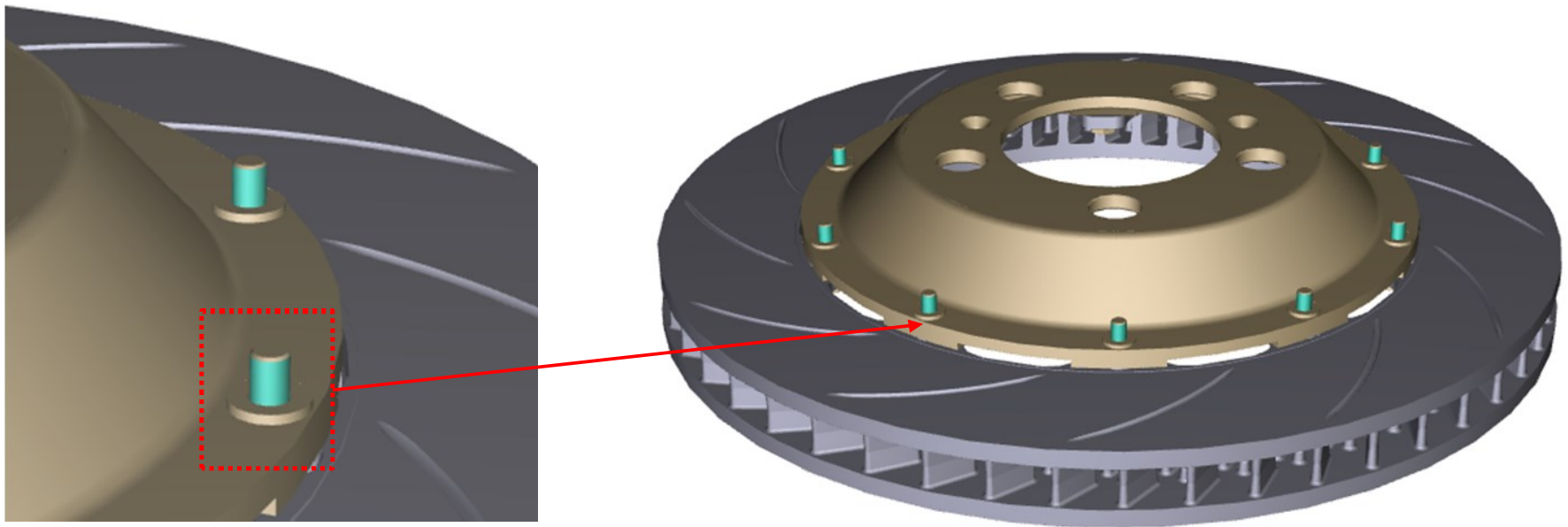
## STEP 3

- Recommend inverting the bell/hub to allow gravity to retain all bolts until nuts are started on threads
- Place disc on the bell/hub using 2 bobbins and bolts to align disc/bell assembly.
- Insert remaining bolts into all holes in the disc/bell.
- Make sure the screws fit correctly through the drilling holes of the bell/hub
- Avoid tilting



## STEP 4

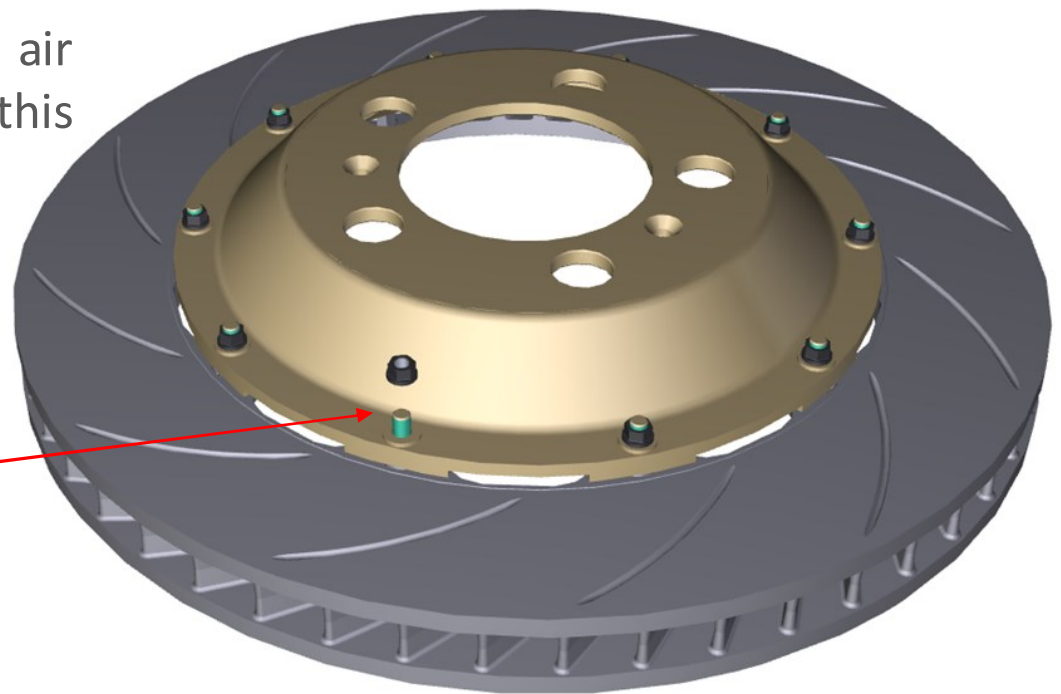
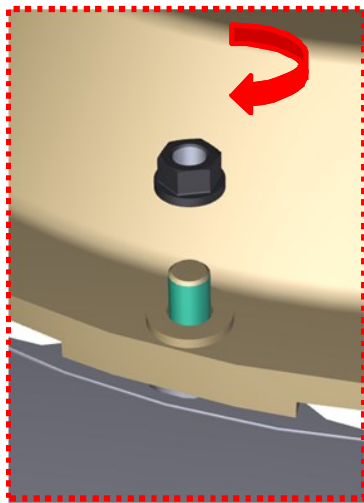
- Put one washer on every screw on the outer surface of the bell/hub





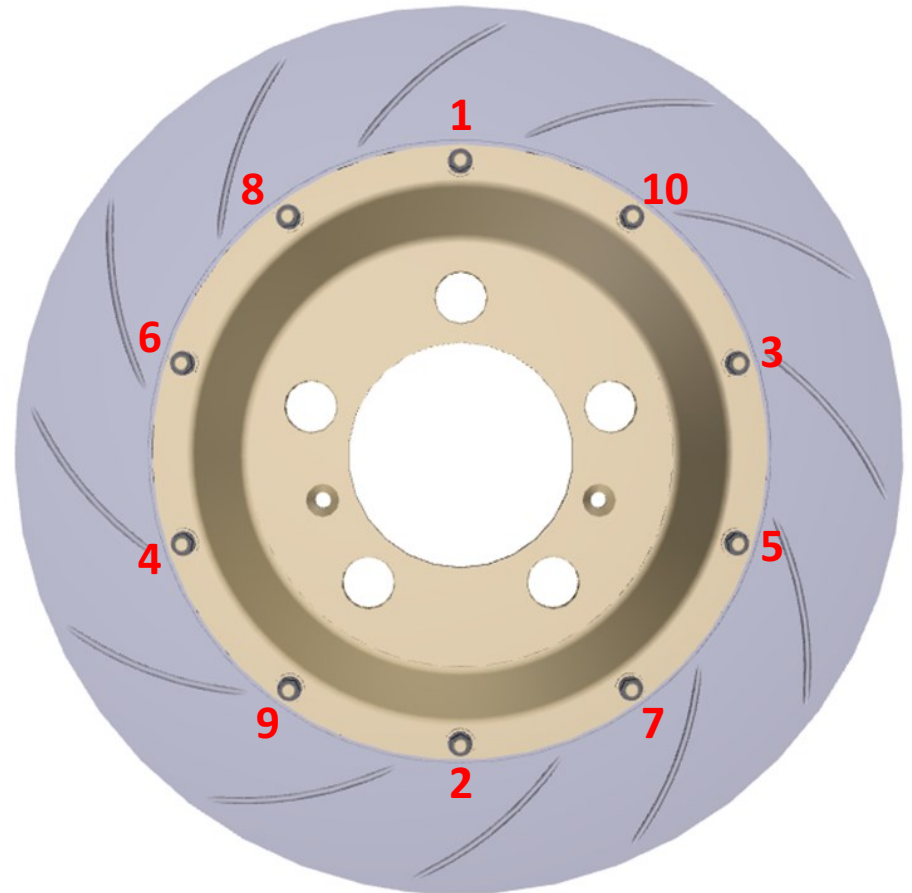
## STEP 5

- Put a screw nut on every bolt sticking through the bell/hub
- Make sure that you have placed a washer on every screw (STEP 4)
- Tighten the nuts by hand (no air tools or powered drivers for this step)



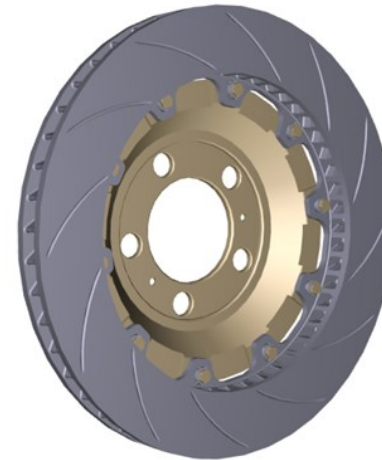
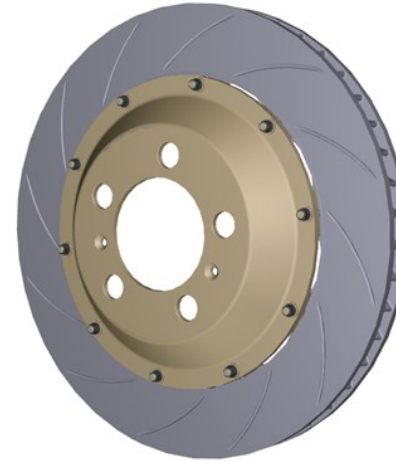
## STEP 6

- Make sure you have carried out STEP 1 – 5 correctly
- Adjust your torque wrench to 14 Nm (123 lb-in or 10.3 lb-ft)
- Tighten all nuts by the following scheme (Alternatively, tighten the screw nuts crosswise)
- Make sure to hold the bolt head stable with your wrench (tighten the nut, not the bolt)



## STEP 7

- Check your assembly
- Make sure every screw is tightened equivalently
- If you pull the bell/hub while holding the rotor you should feel a slight clearance
- The bell/hub should not be warped with the rotor



## READY TO RACE!

- *Experience the difference in braking!*
- *For further support check your local contact or visit [www.pagidracing.com](http://www.pagidracing.com)*

